

Science, Service, Stewardship



NOAA FISHERIES SERVICE

July 30, 2010

The background of the slide is a photograph of several salmon and steelhead fish swimming in clear, shallow water over rocks. The fish are in various stages of their upstream migration, with some showing bright red and orange colors. The water is clear, and the rocks are visible at the bottom.

Tracking the Implementation of ESA Recovery Plans for West Coast Salmon and Steelhead

NOAA Fisheries – Northwest and Southwest Regions

Scott Rumsey

NOAA Fisheries – Northwest Region

scott.rumsey@noaa.gov; (503) 872-2791



Agenda

- Introductions (5 min.)
- Context (E. Gaar; 5 min.)
- Overview presentation (S. Rumsey; 20 min.)
- Questions and discussion (All; 1 hour)
- Next steps (R. Mogren; 30 min.)
 - Opportunities for coordination/collaboration
 - Sharing products, aligning processes

ESA-Listed West Coast Salmon & Steelhead



- 28 listed ESUs/DPSs
- 8 recovery domains
- Multiple management units
- Locally developed recovery plans
- Local implementation and adaptive management of recovery plans

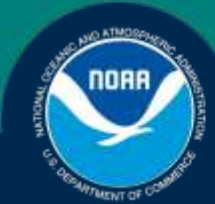
Congress wants to know how we are doing!



Pilot Salmonid Recovery Action Tracking System

Why?

- We lack a central public interface for viewing recovery actions for West Coast salmon and steelhead in a consistent format.
- It is difficult to report the projects being implemented to accomplish recovery actions. Project information is being tracked by various data systems on the West Coast.
- We lack a tool to efficiently respond to inquiries from the public, Congress, and agencies.
- NOAA presently cannot adequately report to Congress on the region's progress in implementing salmon and steelhead recovery plans.
- Several local recovery entities need a tool to track recovery action and project implementation information.



Pilot Salmonid Recovery Action Tracking System

What?

- ❑ Pilot for the Middle Columbia River, Upper Columbia River, and California Central Valley recovery plans
- ❑ *[Eventually]* A spatially-explicit tracking system for all West Coast salmon and steelhead recovery plans
- ❑ A public system enabled with interactive tools for custom displays, queries, exports and reports.
- ❑ *[Eventually]* the system of record for NOAA's evaluation of recovery implementation in ESA 5-year reviews.
- ❑ Display the project information from existing data systems (via “web services”) that are collectively addressing recovery actions
- ❑ A project tracking tool that local recovery entities lacking their own infrastructure can choose to use



Pilot Salmonid Recovery Action Tracking System

Approach:

- Incorporate (*not duplicate or consolidate*) and ensure compatibility with existing tracking systems
- Build on a pilot system developed for the California Central Valley recovery domain
- Take advantage of existing infrastructure of the Pacific Coastal Salmon Recovery Fund data system. Tracking system will be maintained by NWFSC.



Pilot Salmonid Recovery Action Tracking System

Tasks:

1. Develop a standard template for recovery actions
 - Definitions of fields
 - Standard drop-down lists
 - Data dictionaries
 - Business rules

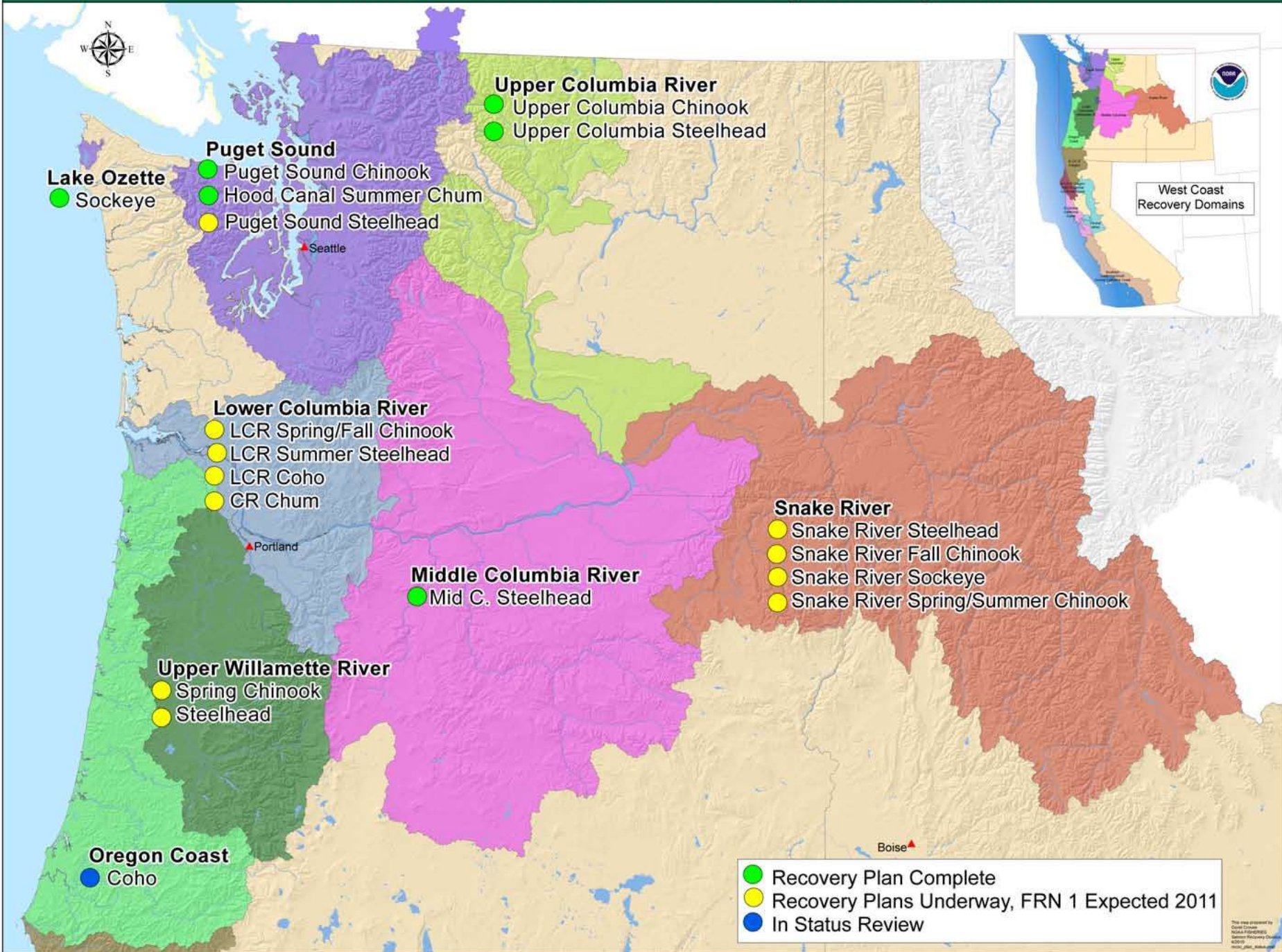


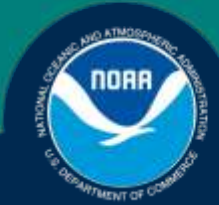
Pilot Salmonid Recovery Action Tracking System

1. Develop a standard template for recovery actions

- Action #
- Action Name
- Action Source
- Reference
- Action Description
- Action Status
- Action start/end dates
- Location
- Total Estimated Cost
- Estimated Costs (Years 1-5, 6-10, etc.)
- Action Duration
- ESU(s)/DPS(s) Affected
- MPG(s) Affected
- MaSA/MiSA Affected
- Funding Source(s)
- Lead Implementing Entity
- Implementing Partners
- VSP Parameters Addressed
- Threats Addressed
- Limiting Factors Addressed
- Action Priority
- Photos/maps

NWR Salmon ESUs and Steelhead DPSs by Recovery Domain





Pilot Salmonid Recovery Action Tracking System

Tasks:

2. Populate template with California Central Valley, Middle Columbia, and Upper Columbia recovery actions
 - Input /upload action information
 - Determine spatial location(s)
3. Build public web interface and tools



[Home](#)
[Recovery Partners](#)
[Actions Map System](#)

[Recovery Plan Brochure \(PDF\)](#)

[CLICK HERE TO DOWNLOAD](#)



[Southwest Regions Recovery Domains](#)

[NMFS Southwest Science Center](#)

Central Valley Salmon and Steelhead Recovery

Welcome to the Central Valley Salmon and Steelhead Recovery home page. This website presents the multi-species salmon and steelhead recovery plan currently under development by the National Marine Fisheries Service (NMFS) and its partners. The site is intended to provide stakeholders with tools and information to interact with their watershed. Contents include:

- Recovery plan chapters
- Interactive map of recovery actions
- Background information and salmon history

NMFS is the lead agency for recovering threatened and endangered Pacific salmon species under the Endangered Species Act. Recovery plans developed by NMFS have no enforcement authority, but rather frame what needs to be done for successful restoration with the eventual goal of de-listing. The three species addressed in this plan are:



Sacramento River Winter Chinook
[ESU MAP \(PDF\)](#)
[Recovery Footprint Map \(PDF\)](#)



Central Valley Spring Chinook
[ESU MAP \(PDF\)](#)
[Recovery Footprint Map \(PDF\)](#)



Central Valley Steelhead
[DPS MAP \(PDF\)](#)
[Recovery Footprint Map \(PDF\)](#)



[Actions Map System](#)

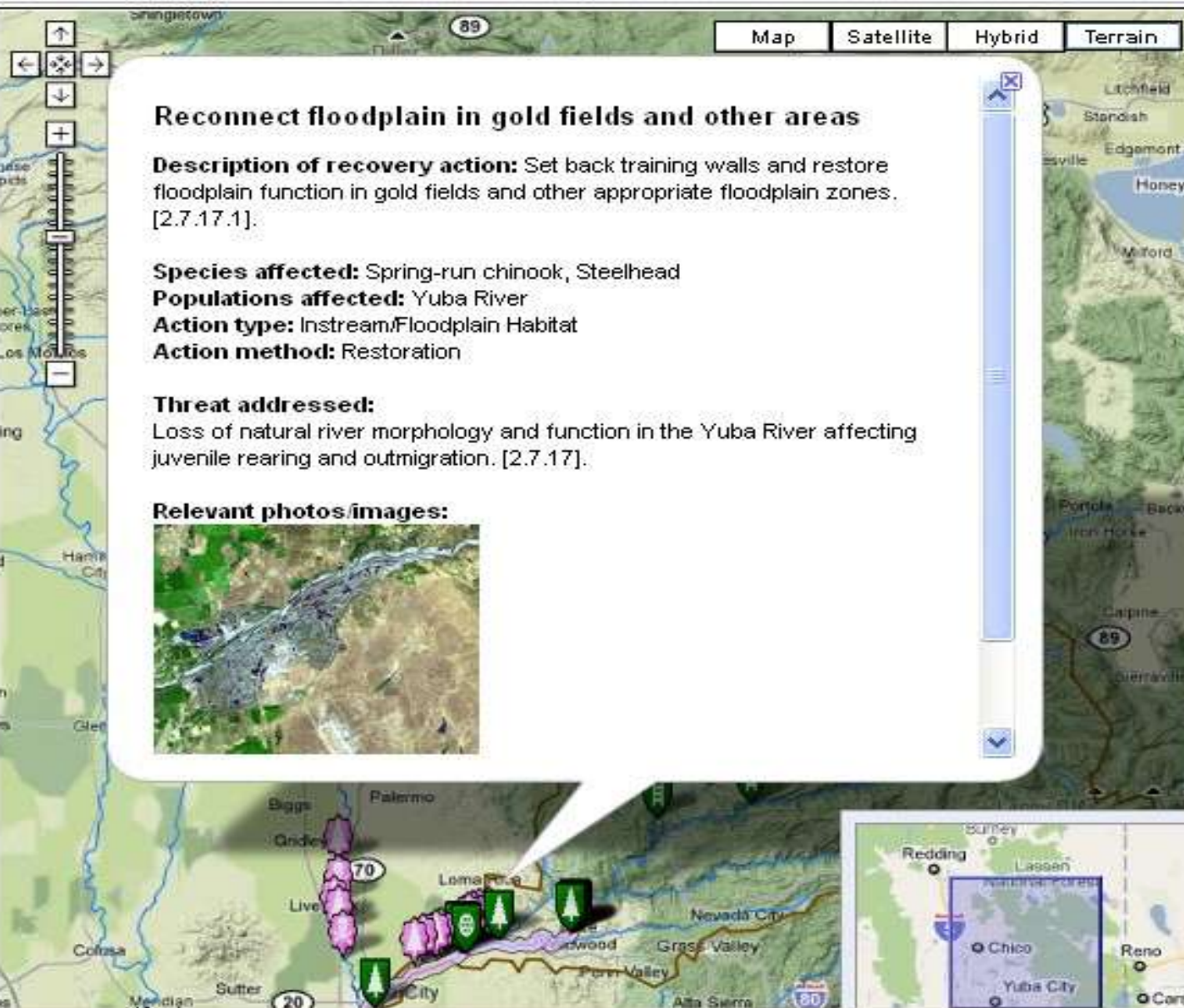
Yuba River Recovery Actions Map

Yuba River Waterst

Area: Yuba River (40)

Species: All (40)

Type: All (40)



Reconnect floodplain in gold fields and other areas

Description of recovery action: Set back training walls and restore floodplain function in gold fields and other appropriate floodplain zones. [2.7.17.1].

Species affected: Spring-run chinook, Steelhead

Populations affected: Yuba River

Action type: Instream/Floodplain Habitat












Action method: Restoration

Threat addressed:

Loss of natural river morphology and function in the Yuba River affecting juvenile rearing and outmigration. [2.7.17].

Relevant photos/images:



-  Daguerre Point Dam fish ladder design
Action type: *Fish Passage*
-  Daguerre Point Dam fish passage study
Action type: *Fish Passage*
-  Englebright Dam fish passage alternatives
Action type: *Fish Passage*
-  Englebright Dam long-term fish passage program
Action type: *Fish Passage*
-  Englebright Dam short-term fish passage study
Action type: *Fish Passage*
-  Log Cabin Dam Fish Passage
Action type: *Fish Passage*
-  New Bullards Bar Dam Fish Passage
Action type: *Fish Passage*
-  Our House Dam Fish Passage
Action type: *Fish Passage*
-  Improve fish screen at Brophy-Yuba water diversion
Action type: *Fish Screens/Rescue*
-  Improve fish screen at Hallwood-Cordua diversion
Action type: *Fish Screens/Rescue*
-  Complete YCWA fry stranding at redd dewatering study to evaluate Narrows II FERC license.
Action type: *Flow*

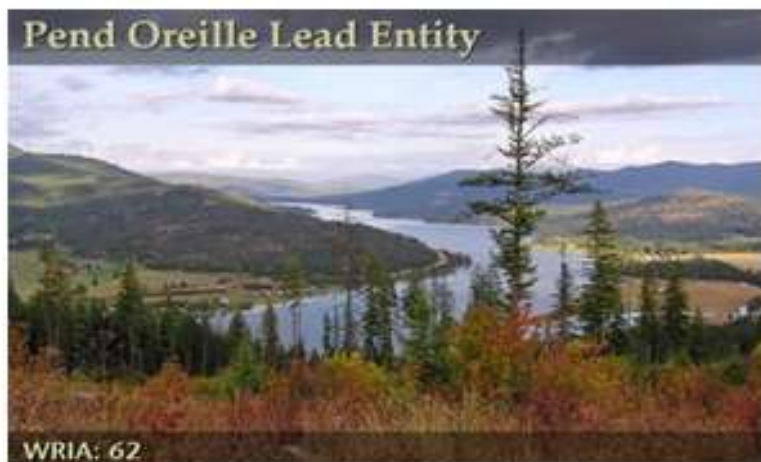
Pend Oreille Lead Entity

About Us

Projects

Files and Links

Map



Location

P.O. Box 39
Usk, WA 99180
[Get directions](#)

Contact

Joseph Maroney (jmaroney@kalispeltribe.com)

Website

<http://www.kalispeltribe.com>

Kalispel Tribe Lead Entity Coordinator

Welcome to the Habitat Work Schedule homepage for salmon habitat restoration and protection. This site is intended to help you better understand the work going on for salmon recovery in your watershed.

We are currently in the process of updating and adding restoration and protection projects to this site. Please check back soon for more information or contact us directly with questions in the interim.

SRFB Documents: [Application Materials](#) and [Comment Forms](#): (Password Required)

Pilot Salmonid Recovery Action Tracking System

Tasks:

4. Build “web services” to display project information associated with recovery actions



Pilot



Long-term
Etc., etc.



Pilot Salmonid Recovery Action Tracking System

Tasks:

5. Provide project tracking tool for those entities that lack the infrastructure

The screenshot shows the PCSRF Project Tracking Data Entry software interface, Version 1.2.3, connected to the PRODUCTION Database. The interface includes a menu bar (Action, Edit, Query, Block, Record, Field, Help) and a toolbar with various icons. The main form is titled "PCSRF Project Information (Section A)" and contains several input fields:

- Project Source:** A dropdown menu.
- Objective:** A dropdown menu.
- Project Reference:** A text input field.
- Project Name:** A text input field.
- Primary Subgrantee:** A dropdown menu.
- Selection Date:** A date input field.
- Start Date:** A date input field.
- Deliverable Date:** A date input field.
- Scheduled End Date:** A date input field.
- Actual End Date:** A date input field.
- Fund Year:** A text input field.
- PCSRF Funds(Proposed):** A text input field.
- PCSRF Funds (Actual):** A text input field.
- State Funds (Proposed):** A text input field.
- State Funds (Actual):** A text input field.

Below the form, there are two tabs: "Proposed Description" and "Actual Description". The "Actual Description" tab is active, showing a list of project locations: Upper Yukon River, Ventura-San Gabriel Coastal, Washington, Washington Coastal (highlighted), Western Alaska, and Willamette. An "Edit" button is visible to the left of the list. To the right of the list, there is a vertical scroll bar and a dropdown menu with options: Completed, Modified, New, Not Funded, Ongoing, and Planned. An arrow points to the "New" option in the dropdown menu.

Questions & Discussion

Pilot Project for Middle and Upper Columbia Domains

- How would you like to stay in the loop on this project?
- How can we best coordinate with your agency/entity?
- Are there ongoing processes, existing products, or products under development that we should utilize or integrate with?
- What features of a NOAA recovery action tracking system would be of the most use to you?

Long term – Expanding the pilot coast wide

- What support or resources will data managers need to link with a NOAA tracking system?

**NOAA
FISHERIES
SERVICE**



Next Steps & Follow-up Items