



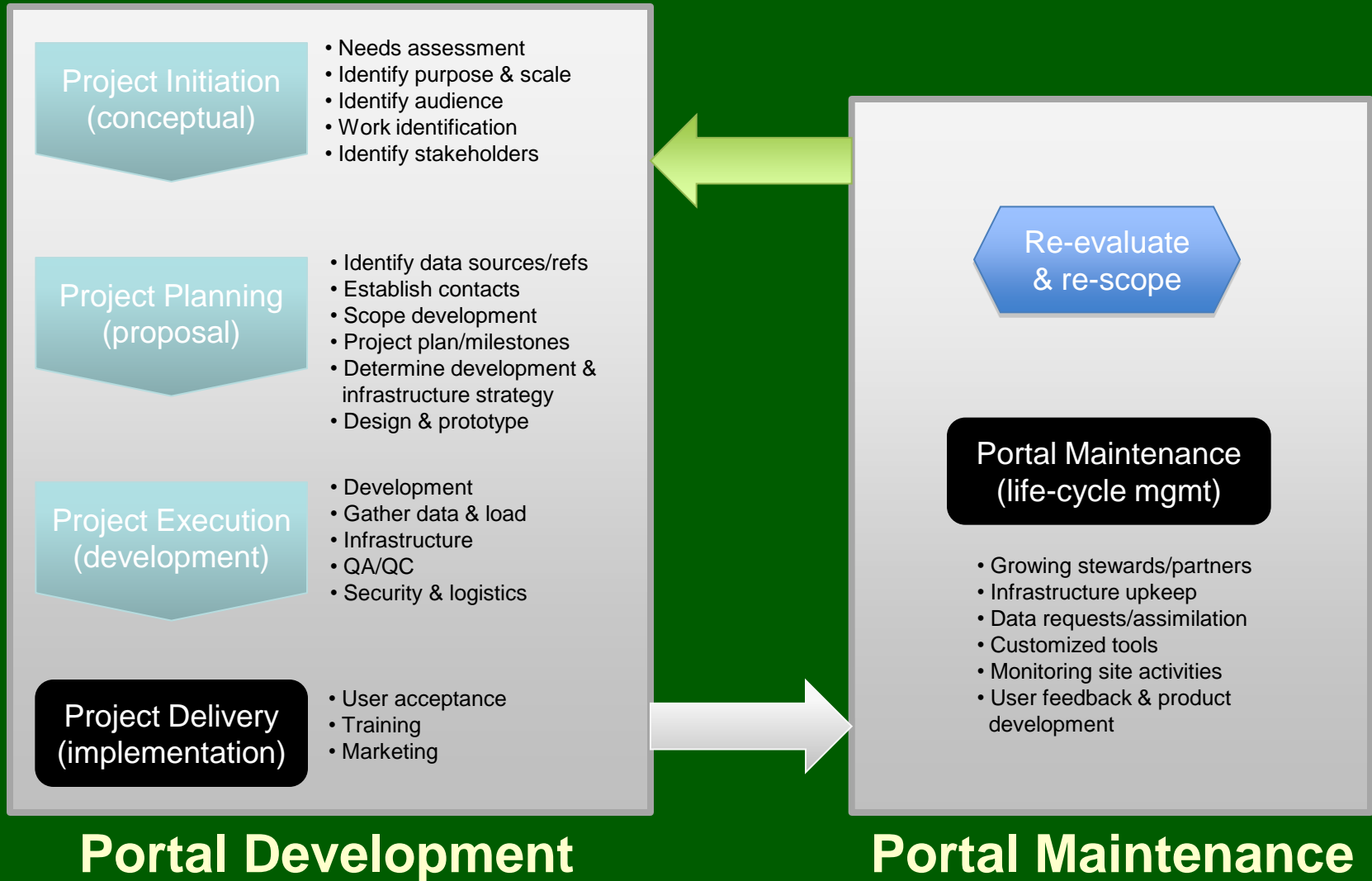
PNAMP Web Portals Workshop

*Enhancing Information Discovery, Delivery
and Flow*

Sean Quigley
USGS PNAMP Data Steward

October 28, 2009
Jean Vollum Natural Capital Center, Portland, OR

Building a Web Portal



Building a Web Portal

- **Project Initiation (Concept Phase)**
 - Needs Assessment
 - Audience (specific domain of users, or everyone?)
 - Stakeholders
 - Scope Work (Can we do it?)

Building a Web Portal

- **Project Planning (Proposal)**
 - Development Strategy
 - Contacts
 - Project Plan (Timeline, Milestones)
 - Development & Infrastructure Strategy
 - Design, Proof of Concept, Prototyping

Building a Web Portal

- **Project Execution (Development)**
 - Data Gathering/Loading
 - Build Infrastructure
 - QA/QC Processes
 - Security & Logistics

Building a Web Portal

- Project Delivery (Implementation)

- User Acceptance

- Training

- Marketing



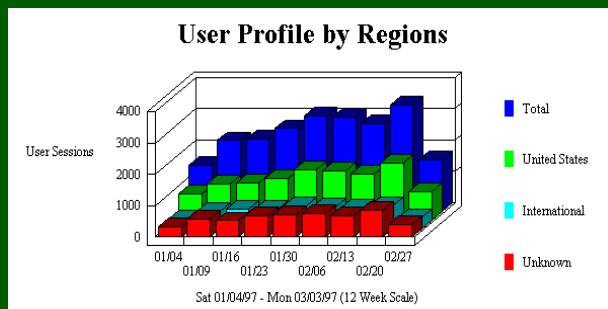
Building a Web Portal

- **Portal Maintenance (Lifecycle Management)**
 - Growing Community of Partners and Stewards (and can you handle it?)
 - Infrastructure Upkeep
 - Responding to Users (customized tools, etc.)

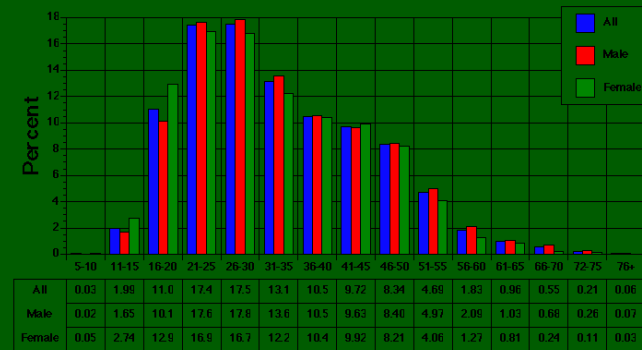
Building a Web Portal

- Re-evaluate & Re-scope

- What Works, What Doesn't?



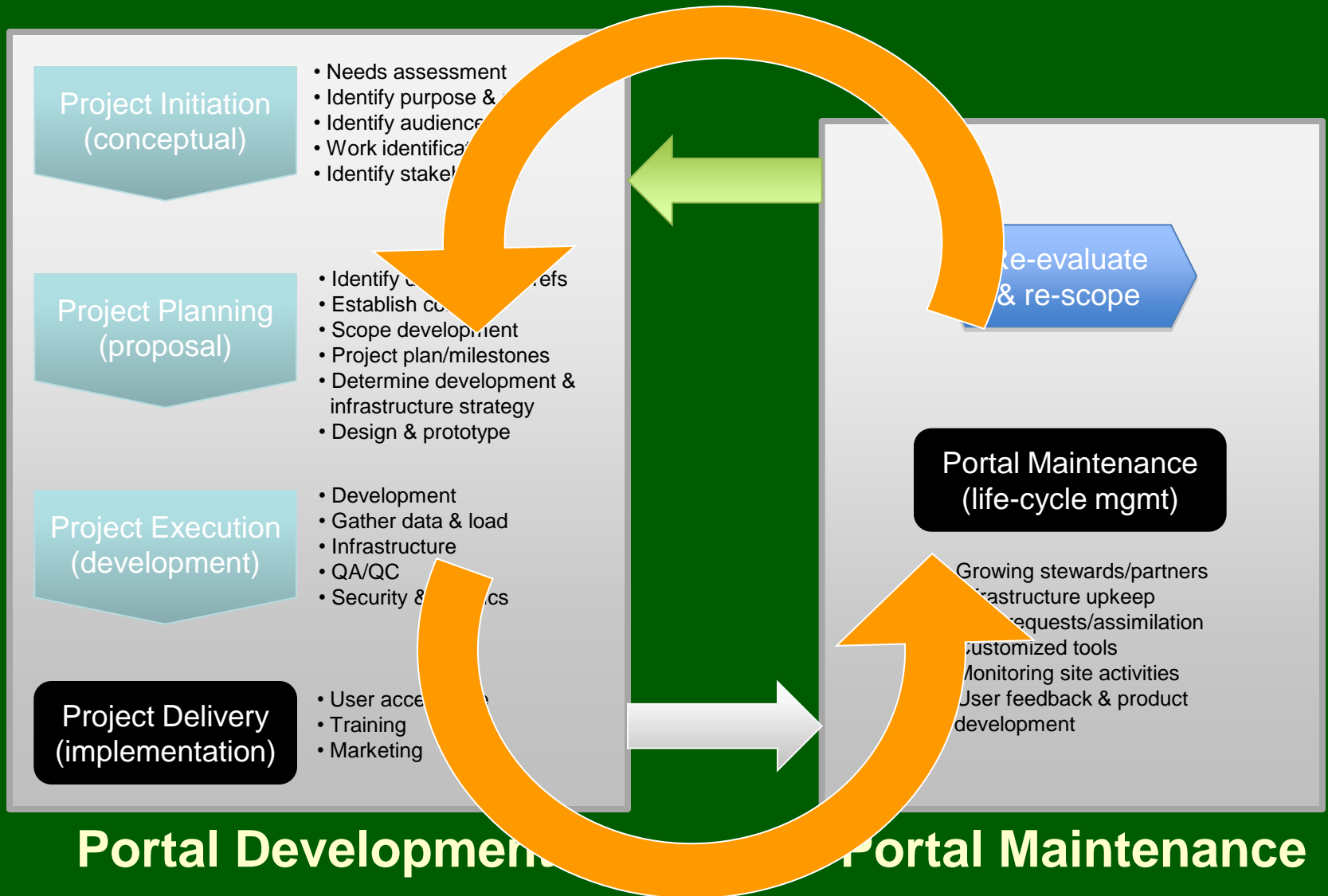
Age split by Gender



Source: GVU's Fifth WWW User Survey™ (Conducted April 1996)
 <URL: http://www.cc.gatech.edu/gvu/user_surveys>
 Copyright 1996 GTRC - ALL RIGHTS RESERVED
 Contact: www_survey@cc.gatech.edu

- How Are Things Changing?

Building a Web Portal



Thank You